



# 2009 J/24 World Championship Sailing Instructions

April 30 - May 8, 2009  
Annapolis Yacht Club (AYC)  
Annapolis, MD



Event website: [www.j24worldchampionship2009.com](http://www.j24worldchampionship2009.com)

## Sponsors

### Presenting



### Navigator



### Tactician Level



## 1 RULES

- 1.1 The regatta will be governed by the rules as defined in The Racing Rules of Sailing (RRS).
- 1.2 RRS 63.7 applies without modification. This changes NOR 1.2.
- 1.3 No national prescriptions will apply except US SAILING prescriptions to RRS 68 and 76.1 and added RRS 76.3 shall apply. A copy of these prescriptions is included as Attachment I.
- 1.4 Per RRS 80, advertising shall comply with International Sailing Federation (ISAF) Regulation 20, and International J/24 Class Association rule (CR) 2.6.1.
- 1.5 While racing, RRS 41 applies without modification. In addition, from the time a boat leaves her mooring for the first race of each day until she returns to her mooring, she shall not receive outside help except as permitted by RRS 41(a) through (d) from any outside source other than boats under the direction of the organizing authority or other competitors.
- 1.6 Any questions regarding these sailing instructions shall be submitted in writing to the front office at the main AYC clubhouse. The questions and any answers will be posted on the regatta notice board located on the side of the AYC Junior Sailing Center.
- 1.7 Bow numbers will be assigned to each boat and will be used as the identification for the boat during the regatta. Bow numbers shall be applied in accordance with instructions supplied with the numbers and shall remain affixed until after the boat hauls out at the end of the regatta.

## 2 NOTICES TO COMPETITORS

Notices to competitors will be posted on the regatta notice board located on the side of the AYC Junior Sailing Center.

## 3 CHANGES IN SAILING INSTRUCTIONS

Any change in the SI will be posted before 0900 on the day it will take effect, except that any change in the schedule of races will be posted by the close of protest filing time on the day before the change is to take effect.

## 4 SIGNALS MADE ASHORE

- 4.1 Signals made ashore will be displayed on the flagpole on the 2nd deck of the AYC Clubhouse.
- 4.2 Numeral pennant "1" or "2" means that the race committee will rendezvous at rendezvous 1 or 2, respectively (see SI 7).
- 4.3 When flag AP is displayed ashore, '1 minute' is replaced with 'not less than 90 minutes' in the Race Signal AP.

## 5 SCHEDULE OF RACES

5.1 Schedule of racing is as follows:

Thursday, April 30	0800-1900	Measurement, Registration and Weigh-In
Friday, May 1	0800-1900	Measurement, Registration and Weigh-In
Saturday, May 2	0800-1900	Measurement, Registration and Weigh-In
Sunday, May 3	0800-1500 1200 1600	Weigh-In Warning Signal for Practice Race Opening Ceremony & Reception/Skippers Meeting
Monday, May 4	0800-0900 1100	Late Weigh-In Warning Signal For Race 1; Race 2 to follow
Tuesday, May 5	1100	Warning Signal For Race 3; Races 4 and 5 to follow (Changes NOR 10.1)
Wednesday, May 6	1100	Warning Signal For Race 6; Race 7 to follow
Thursday, May 7	1100	Warning Signal For Race 8; Race 9 to follow
Friday, May 8	1100	Warning Signal For Race 10

5.2 Ten races are scheduled. Refer to SI 18.1 for minimum number of races needed to constitute a series.

5.3 When the race committee intends to run another race on any day, they will fly flag R from the finishing committee boat of the current race. The warning signal for the succeeding race will be made as soon as practicable. The race committee may run more than two races per day (this changes NOR 10.1).

5.4 Races not completed on the scheduled day are rescheduled as the first races on the following day. Races not completed on the last day of racing will not be sailed.

5.5 No warning signal will be made after 1430 hours on Friday, May 8th, 2009.

## 6 CLASS FLAG

The class flag will be a white flag displaying the 'J/24' logo.

## 7 RACING AREA

Attachment II shows the location of the racing area and two possible rendezvous locations on the waters of the Chesapeake Bay. The race committee will signal the rendezvous location (see SI 4.2) no later than 0830 each racing day. A race committee boat will be at the rendezvous location 60 minutes prior to the first scheduled warning signal each day.

## 8 CHECK-IN, CHECK-OUT

8.1 Before the warning signal of the first race each day, each boat shall sail on starboard tack past the stern of a designated race committee boat displaying flag 'L' prior to the warning signal and hail her bow number until acknowledged by the race committee repeating the boat's number.

8.2 A boat that retires from a race or does not intend to compete in a race shall notify the race committee as soon as possible.

## 9 THE COURSE

9.1 The course will be a 5-leg windward/leeward course as diagrammed in Attachment III.

9.2 An offset mark will be used in conjunction with mark 1. The offset mark will be placed to the left of the weather mark (looking upwind) at approximately a right angle to the weather leg and approximately 7-12 boat lengths (60-100 m) to port of Mark 1.

- 9.3 Mark 2 will be a gate consisting of two marks. Boats must pass through the gate and then round mark 2p to port or mark 2s to starboard.
- 9.4 No later than the warning signal the race committee signal boat will display the approximate compass bearing and distance for the first leg from the starting line to mark 1.

## 10 SHORTENING COURSE

No course shall be shortened to less than four legs in length. For purposes of this SI only, the distance between mark 1 and the offset mark is not a leg of the course. This changes RRS 33.

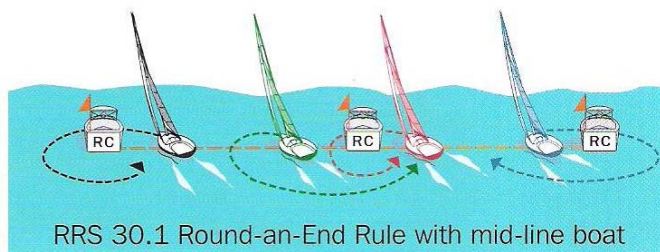
## 11 MARKS

- 11.1 Marks 1, 2p, and 2s will be orange cylinders.
- 11.2 The offset mark will be a lime green cylinder.
- 11.3 New marks, when used in accordance with RRS 33 will be orange cylinders with a black band.
- 11.4 The starting marks will be race committee boats.
- 11.5 The finishing marks will be race committee boats.

## 12 THE START

- 12.1 Races will be started using RRS 26. The race committee will announce the imminent start of a sequence by hoisting the starting line flags, with a long sound signal one minute prior to the warning signal. The race committee may also use VHF Channel 72 to announce the intended time of warning signals, and to count down the last ten seconds before the warning preparatory, and starting signals. Failure to make or to receive such broadcasts shall not be grounds for redress.
- 12.2 The starting line will either be between:
- (a) staffs with orange flags on race committee boats at each end of the line; or,
  - (b) a staff with an orange flag on a race committee signal boat at the starboard end, a staff with an orange flag on the mid-line boat, and between the staff on the mid-line boat and a race committee boat at the port end. The mid-line boat may not be on a straight line between the starboard end signal boat and the port end boat.
- 12.3 The starting line will be to leeward of marks 2p and 2s.
- 12.4 A boat that starts more than 10 minutes after her starting signal will be scored DNS without a hearing. This changes RRS 63.1, A4.2 and A5.
- 12.5 Recalls - After the starting signal, the race committee intends to announce the sail and/or bow number of the recalled boat(s) on VHF channel 72. The following shall not be grounds for granting redress (this changes RRS 62.1(a)):
- (a) Failure of a boat to hear the recall broadcast.
  - (b) A boat's position in the sequence of broadcast numbers.
  - (c) Failure of the race committee to broadcast any numbers.

- 12.6 When RRS 30.1 (I-Flag Rule) is in effect and a mid-line boat is used, boats may also sail to the pre-start side by rounding the mid-line boat to port as though it was the port end of the line. This changes RRS 30.1.



- 12.7 When RRS 30.3 (Black Flag Rule) is in effect, the race committee intends to redisplay the black flag after the start to notify the fleet that one or more boats will be penalized (this changes RRS 30.3). The race committee also intends to announce the sail and/or bow numbers of the boats that have broken RRS 30.3 via VHF channel 72. Failure to redisplay the black flag, or to make or to receive the VHF broadcasts shall not be grounds for redress.

### 13 THE FINISH

- 13.1 The finishing line will be between a staff displaying an orange flag on the race committee boats at each end of the line.

### 14 TIME LIMITS

- 14.1 If no boat has passed mark 1 within 45 minutes of the start, the race will be abandoned.
- 14.2 If no boat has finished within 90 minutes of the start, the race will be abandoned.
- 14.3 Boats still racing (and that do not subsequently retire, get disqualified, or get redress) 30 minutes after the first boat sails the course and finishes, will be scored TLE (Time Limit Expired, see SI 18.3, Scoring) and should proceed to the starting area if another race is scheduled. The race committee boat at the finishing line will lower the blue flag with a long sound signal when the 30-minute period expires. This changes RRS 35.

### 15 PENALTY SYSTEM

- 15.1 RRS 44.3, Scoring Penalty, as modified herein, will apply. RRS 44.2, One-Turn and Two Turns Penalties, is deleted.
- 15.2 After-Race Scoring Penalty - A boat that may have broken a rule of Part 2 or rule 31 while *racing* may take a penalty after *racing* and prior to the start of a protest hearing involving the incident. Her penalty shall be a Scoring Penalty of 40% calculated as described in rule 44.3(c), but not more than half of the difference between the boat's score prior to applying the penalty and the score for boats that are scored DNF. However, if she caused injury or serious damage or gained a significant advantage in the race or series by her breach, her penalty shall be to retire. This adds to rule 44. A boat accepting an After-Race Scoring Penalty shall file a "Scoring Penalty Acceptance Form" at the jury office located at the AYC Junior Sailing Center.
- 15.3 RRS 44.3(a) is changed such that code flag "I" is acceptable, and the flag shall have a hoist of at least 150 mm and a fly of at least 200 mm and shall be flown from a leg of the back stay adjuster above the deck.
- 15.4 The reporting requirements of RRS 44.3(b) may be satisfied by contacting the race committee on VHF channel 72. The race committee will post a list of boats that have accepted a scoring penalty on the official notice board.
- 15.5 In addition to the reporting requirements of RRS 44.3(b), a boat accepting a scoring penalty shall file a "Scoring Penalty Acceptance Form" available at the jury office located at the AYC Junior Sailing Center and lodged there within protest time limit.
- 15.6 A boat that complies with some but not all of the requirements of 44.3(a), 44.3(b) and SI 15.5 will receive an After-Race Scoring Penalty without a hearing. This changes rule RRS 63.1.

- 15.7 A boat failing to comply with SI 8.1, Check-in, shall receive a 20% scoring penalty in the next race without a hearing, calculated in accordance with RRS 44.3(c). This changes RRS 63.1 and A5.
- 15.8 Penalties for breaking instructions 1.5, 1.7, 8.2, 19.4, 20, 22 and 23 may be less than disqualification if the jury so decides.
- 15.9 RRS 64.1 is changed to allow the jury to assign penalties in accordance with Attachment IV: Penalties For Breaking Some IJCA Rules.
- 15.10 Add to RRS 64.1(c): If a boat receives a penalty when not racing under SI 15.8 or 15.9 that penalty shall apply to the race designated by the jury.

## **16 PROTESTS AND REQUESTS FOR REDRESS**

- 16.1 RRS 61.1(a) is changed such that the red flag shall have a hoist of at least 150 mm and a fly of at least 200 mm and shall be flown from a leg of the back stay adjuster above the deck.
- 16.2 Protest forms are available at the jury office located at the AYC Junior Sailing Center. Protests shall be delivered there within the protest time limit.
- 16.3 The protest time limit is 60 minutes after the race committee signal boat docks after the last race of the day. The same time limit applies to protests or requests for redress by the race committee and jury about incidents they observe in the racing area. This changes RRS 61.3 and 62.2.
- 16.4 The race committee will post a list of penalties being assigned by the race committee prior to the end of protest time limit. The deadline for requesting redress based on these scores will be either 30 minutes after posting of the penalty notice, or the protest time limit, whichever is later.
- 16.5 Notices will be posted within 30 minutes of the protest time limit to inform competitors of hearings in which they are parties or named as witnesses. Hearings will be held at the AYC Junior Sailing Center, beginning as soon as practical after a protest is filed.
- 16.6 Notices of protests by the race committee or jury will be posted. Such posting within the protest time limit satisfies the requirement to inform boats as soon as reasonably possible under RRS 61.1(b).
- 16.7 Breaches of instructions 1.7, 19, 22, and 23 will not be grounds for a protest by a boat. This changes RRS 60.1(a).
- 16.8 On the last day of the regatta a request for reopening a hearing shall be delivered:
  - (a) Within the protest time limit if the party requesting reopening was informed of the decision on the previous day;
  - (b) No later than 30 minutes after the party requesting reopening was informed of the decision on that day. This changes RRS 66.
- 16.9 If a hearing is held by a panel formed under N1.4(b), the deadline for a party to ask for a hearing by a panel composed in compliance with rules N1.1, N1.2 and N1.3 is 30 minutes after being notified of the initial decision.
- 16.10 Decisions of the jury will be final as provided in RRS 70.5.

## **17 ARBITRATION**

- 17.1 An arbitration meeting will be held prior to a protest hearing for each incident resulting in a protest involving a rule of Part 2 or rule 31 (changes NOR 14), unless the arbitrator deems the incident inappropriate for arbitration. One representative of each party, who was on board at the time of the incident, will meet with the arbitrator. If all the parties to a protest are not represented, the arbitration meeting shall not be held. No additional witnesses will be permitted at the arbitration.



- 17.2 After hearing the testimony, the arbitrator will offer one of the following opinions:
- (a) The protest committee would find the protest to be invalid. The arbitrator will allow the protestor to withdraw the protest.
  - (b) The protest committee would find that no boat broke a rule. The arbitrator will allow the protestor to withdraw the protest.
  - (c) The protest committee would find that one or more boats represented in the arbitration meeting broke a rule of Part 2 or rule 31. The arbitrator would offer each of those boats the option to accept an After-Race Scoring Penalty, or to retire. The arbitrator will allow the protestor to withdraw the protest.
  - (d) A protest hearing is appropriate.
- 17.3 The protest committee will schedule a protest hearing for any protests that are not withdrawn. Any boat that accepted an After-Race Scoring Penalty (see SI 15.2) will not be penalized further as a result of the protest hearing, unless the protest committee concludes that the boat caused injury or serious damage, gained a significant advantage in the race or series, or broke a rule other than a rule of Part 2 or rule 31.
- 17.4 If a protest is withdrawn, no protest hearing will be held; and the protest cannot be the subject of a request for redress or appeal.
- 17.5 Following an arbitration meeting, the arbitrator of that meeting may allow the protest to be withdrawn. This changes rule 63.1.

## **18 SCORING**

- 18.1 Four races are required to be completed to constitute a world championship.
- 18.2 When fewer than five races have been completed, a boat's series score will be the total of her race scores.
- 18.3 Boats scored TLE will be scored points equal to the number of boats finishing within the time limit plus two points by the race committee without a hearing. This changes RRS A4.2, A5 and A11.

## **19 REPLACEMENT OF CREW OR EQUIPMENT**

- 19.1 Substitution of competitors will be allowed only with prior written approval of jury.
- 19.2 Unless the jury specifies otherwise, any substitution permitted will be for 24 hours only.
- 19.3 The number of crew shall not change during the regatta.
- 19.4 Substitution of damaged or lost equipment will not be allowed unless approved by the jury. Requests for substitution shall be made to the jury at the first reasonable opportunity.
- 19.5 Requests for substitution shall be submitted in writing at the jury office located at the AYC Junior Sailing Center and any reply shall be posted on the regatta notice board.

## **20 EQUIPMENT AND MEASUREMENT CHECKS**

A boat or equipment may be inspected at any time for compliance with the class rules and sailing instructions. On the water a boat can be instructed by the race committee to proceed immediately to a designated area for inspection.



## 21 OFFICIAL BOATS

Official boats will be marked as follows:

Race Committee	Blue Flag with "RC"
Judges	White Flag with "Judges"
Measurement	White Flag with "M"
Media	Green Flag with "Media"
Medical	White Flag with Red Cross

## 22 HAUL-OUT RESTRICTIONS

Boats shall be afloat by Sunday, May 3rd at 1600 and shall not be hauled out during the regatta except with and according to the terms of prior written permission of the jury.

## 23 DIVING EQUIPMENT, PLASTIC POOLS AND CAREENING RESTRICTIONS

- 23.1 Underwater breathing apparatus and plastic pools or their equivalent shall not be used around boats between the time and date specified in SI 22 and the end of the regatta.
- 23.2 Careening by any means for the purpose of cleaning or inspecting the hull is prohibited, unless permitted by the jury in writing at the jury office located at the AYC Junior Sailing Center.
- 23.3 The hull may be cleaned at any time by swimming or keelhauling using ropes or cloth.

## 24 RADIO COMMUNICATION

A boat shall neither make radio or other data transmissions while racing nor receive radio or mobile phone communication not available to all boats.

## 25 PRIZES

- 25.1 The winning helmsperson will be named the 2009 J/24 World Champion.
- 25.2 Prizes will be awarded to the skippers and crew of the top 10 boats overall. Prizes will also be awarded to the top 5 boats in each individual race daily. Other prizes may be awarded.

## 26 DISCLAIMER OF LIABILITY

Competitors participate in the regatta entirely at their own risk. See RRS 4, Decision to Race. The organizing authority will not accept any liability for material damage or personal injury or death sustained in conjunction with or prior to, during, or after the regatta.

## 27 INSURANCE

The person in charge (RRS 46) of each participating boat shall be insured with marine liability insurance (property and injury) with a minimum coverage of \$US 300,000 during the regatta.



# ATTACHMENT I - APPLICABLE US SAILING PRESCRIPTIONS TO THE RACING RULES OF SAILING

**Rule 68** After rule 68 add:

*US SAILING prescribes that:*

- (a) A boat that retires from a race or accepts a penalty does not, by that action alone, admit liability for damages.*
- (b) A protest committee shall find facts and make decisions only in compliance with the rules. No protest committee or US SAILING appeal authority shall adjudicate any claim for damages. Such a claim is subject to the jurisdiction of the courts.*
- (c) A basic purpose of the rules is to prevent contact between boats. By participating in an event governed by the rules, a boat agrees that responsibility for damages arising from any breach of the rules shall be based on fault as determined by application of the rules, and that she shall not be governed by the legal doctrine of 'assumption of risk' for monetary damages resulting from contact with other boats.*

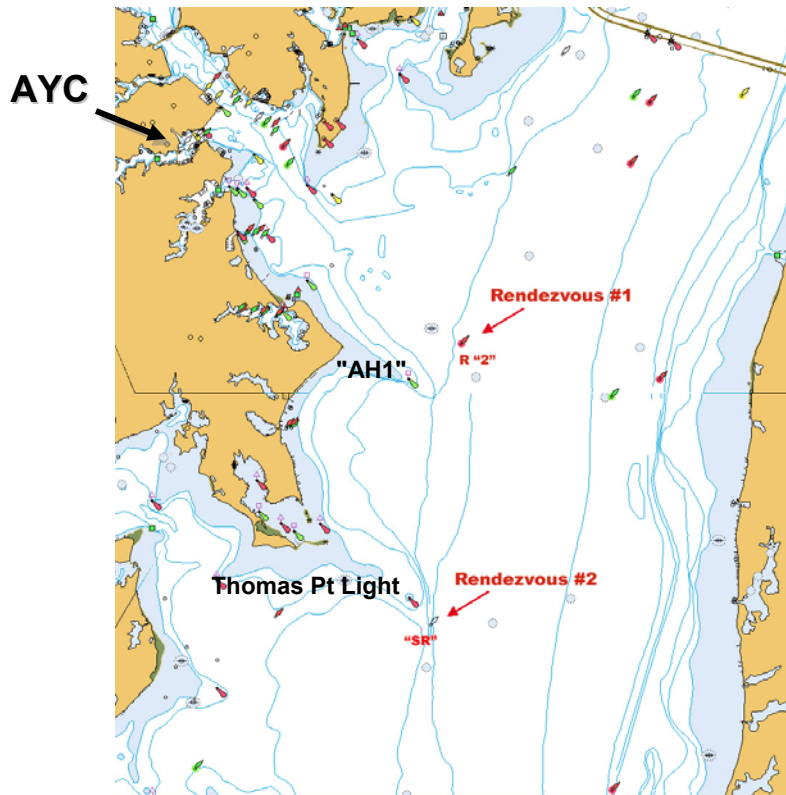
**Rule 76.1** After rule 76.1 add:

*US SAILING prescribes that an organizing authority or race committee shall not reject or cancel the entry of a boat or exclude a competitor eligible under the notice of race and sailing instructions for an arbitrary or capricious reason or for reason of race, color, religion, national origin, gender, sexual orientation, or age.*

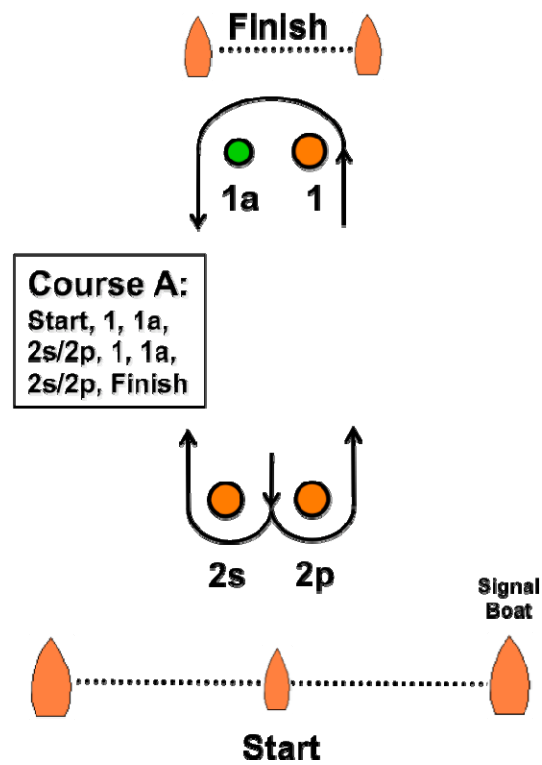
**Rule 76.3** Add rule 76.3:

*76.3 US SAILING prescribes that a boat whose entry is rejected or cancelled or a competitor who is excluded from a race or series shall be, upon written request, entitled to a hearing conducted by the protest committee under rules 63.2, 63.3, 63.4 and 63.6.*

## ATTACHMENT II - RACING AREA LOCATION



## ATTACHMENT III - COURSE DIAGRAM



## ATTACHMENT IV - PENALTIES FOR BREAKING SOME IJCA CLASS RULES

Alternative scoring penalties shall apply for breaking certain class rules. All of these scoring penalties shall be calculated as described in rule 44.3(c) and shall be applied to all races for which the boat was in non-compliance.

CLASS RULE	INFRINGEMENT	SCORING PENALTY
2.5.6	A copy of the Measurement Certificate and the Inventory of Required and Optional Equipment (CR 3.7.3) are to be kept aboard the yacht one or both items are not on board.	20%
2.6.1	Advertising does not conform to the restrictions	20%
3.8.5	A bailing bucket of minimum capacity 9 liters fitted with a lanyard is not on board.	40%
3.8.9	2 liters or more of motor fuel is not on board when the boat crossed the finish line for the last race of the day	20%
4.1.3	The compass is installed but inoperable.	20%
4.1.8	The throwable lifesaving device and attached sea anchor not on deck and ready for use.	40%
4.1.10	The required first aid kit and manual are not on board	20%
4.3	Any of anchor(s), outboard motor, battery and fuel container are not secured against movement.	20%
3.6.10 o)	The luff and/or foot of the mainsail set outside the distinguishing bands as defined in CR 3.5.2(d) and 3.5.5(c).	20%
7.1.19	Elastic (shock) cord is used in the standing or running rigging.	20%
8.1.2	The stowage of required or optional equipment other than unbagged sails on the cabin sole over the keel.	20%
8.1.3	Use of other than normal sailing gear in normal, designed and proper storage areas to attain sailing weight.	20%
8.1.4	The connection to the mast heel of any adjustment device or equipment.	20%
8.4	The removal of the rudder from the water when the Sailing Instructions stipulate that the boat shall remain afloat for the duration of the regatta	20%

If a boat receives one of the above penalties, the protest decision shall include whether the same penalty can or will be applied to subsequent infringements. The protest decision may also specify that the boat cannot be protested again under the same class rule for a time period specified by the jury.

Amended to include Class Rule Changes Effective March 1, 2009.

